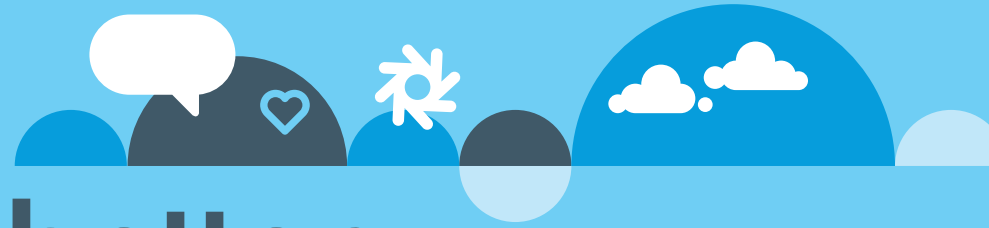


With Sonic, everyday sounds better



The Sonic Family of Products

	RIC / RITE	BTE	Custom	Super Power BTE
100 Premium	Celebrate ¹⁰⁰ Flip ¹⁰⁰	Celebrate ¹⁰⁰ Bliss ¹⁰⁰	Celebrate ¹⁰⁰ Bliss ¹⁰⁰	
80 Advanced	Celebrate ⁸⁰ Flip ⁸⁰	Celebrate ⁸⁰ Bliss ⁸⁰	Celebrate ⁸⁰ Bliss ⁸⁰	Journey ⁸⁰
60 Mid-Level	Cheer ⁶⁰ Flip ⁶⁰	Cheer ⁶⁰ Charm ⁶⁰	Cheer ⁶⁰ Charm ⁶⁰	
40 Basic	Cheer ⁴⁰ Flip ⁴⁰	Cheer ⁴⁰ Charm ⁴⁰	Cheer ⁴⁰ Charm ⁴⁰	Journey ⁴⁰
20 Entry	Cheer ²⁰	Cheer ²⁰ Pep ²⁰	Cheer ²⁰ Pep ²⁰	

Product Levels

TECHNOLOGY OVERVIEW

	Celebrate ¹⁰⁰ Bliss ¹⁰⁰ Flip ¹⁰⁰	Celebrate ⁸⁰ Journey ⁸⁰ Bliss ⁸⁰ , Flip ⁸⁰	Cheer ⁶⁰ Charm ⁶⁰ Flip ⁶⁰	Cheer ⁴⁰ Journey ⁴⁰ Charm ⁴⁰ , Flip ⁴⁰	Cheer ²⁰ Pep ²⁰
Speech Variable Processing	■	■	■	■	■
Frequency Bandwidth	10 kHz	8 kHz, 10 kHz CL ⁸⁰	8 kHz	8 kHz	8 kHz
Frequency Transfer ¹	■	■	■	■	
Noise Management					
Speech Priority Noise Reduction	■	■	■	■	■ ⁷
Adaptive Noise Reduction					■ ⁸
Wind Noise Reduction	■	■	■	■	
Soft Noise Reduction	■	■	■	■	■
Impulse Noise Reduction	■	■			
Reverb Reduction ²	■	■			
Directionality					
Fixed Omni	■	■	■	■	■
Fixed Directional	■	■	■	■	■
Adaptive Directional	■	■	■	■ ⁹	
Hybrid Adaptive Directional	■	■ ³			
Feedback Cancellation					
Advanced Adaptive Feedback Canceller	■	■	■	■	■ ⁷
Standard Adaptive Feedback Canceller					■ ⁸
Binaural Coordination*					
Volume Control & Program Change ⁴	■	■	■	■	■
Environment Classification	■	■			
Non-Telephone Ear Control (Automatic)	■	■ ³	■ ¹⁰		
Speech Priority Volume Control ⁵	■				
Connectivity*					
SoundGate 3	■	■	■	■ ⁶	■ ⁷
TV Adapter 2	■	■	■	■ ⁶	■ ⁷
Phone Adapter 2	■	■	■	■ ⁶	■ ⁷
RC-N Remote Control	■	■	■	■ ⁶	■ ⁷
SoundGate Mic	■	■	■	■ ⁶	■ ⁷

1) Celebrate¹⁰⁰, Celebrate⁸⁰, Journey⁸⁰, Journey⁴⁰ and Cheer⁶⁰ Only

2) Celebrate¹⁰⁰, Celebrate⁸⁰ and Journey⁸⁰ Only

3) Celebrate⁸⁰ and Journey⁸⁰ Only

4) Program Change only in Journey⁸⁰ and Journey⁴⁰; feature not available in Charm⁴⁰, Flip⁴⁰ and Pep²⁰

5) Celebrate¹⁰⁰ Only

6) Journey⁴⁰ and Cheer⁴⁰ Only

7) Cheer²⁰ Only

8) Pep²⁰ Only

9) Cheer⁴⁰ Only

10) Cheer⁴⁰ Only

*Requires wireless

STYLE OVERVIEW



IIC CIC CICW CICIP CICIPW ITC ITCW ITCW ITCW ITE ITEPDW MN BTE BTE BTE P MNR MNR N P CPx SP

Product Line	IIC	CIC	CICW	CICIP	CICIPW	ITC	ITCW	ITCW	ITCW	ITE	ITEPDW	MN	BTE	BTE	BTE P	MNR	MNR	N	P	CPx	SP	
Celebrate ^{100,80}	● ¹	●	●		●	●	●	●	●	●	●	●					●		●			
Cheer ^{60,40,20}	● ¹	● ²	●		● ²	●	● ²	● ²	●	● ²	●						●	●	●	●		
Bliss ^{100,80}	● ¹	●		●				●	●	●	●	●	●									
Charm ^{60,40}	● ¹	●		●				●	● ³	●	● ³	●	●									
Pep ²⁰		●				●		●						●	●							
Flip ^{100,80,60,40}																●						
Journey ^{80,40}																					●	
Battery Size	10	10	10	10	10	312	312	312	312	13	13	13	13	13	13	13	312	312	13	13	13	
Est. Battery Life (hours)	123	133 111 (Pep)	94	97	90	200	153	188 129 (Pep)	159	323	274	292	258	221	207	238 [Std] 112 [Pwr]	113 [Std] 134 [Pwr]	164	185	193	154	
Program Button			●	●	●	●	●	●	●	●	●	■	■	■	■	■	■	■	■	■	■	■
Volume Control			*		*	●	*	●	*	●	*	*	■	■	■	■	■	*	*	■	■	■
Directionality								■	■	■	■	■	■	■	■	■	■	■	■		■	
Telecoil						●	●	●	●	●	●		■	■	■	■	■		■	■	■	
Auto Telephone							●	●	●	●	●	■	■			■	■		■	■	■	
Wireless Accessories	● ⁴		●		●		●		●		●	●	●		●	●	●	●	●	●	●	
DAI/FM												■	■	■	■				■	■	■	
Earhook												■	■	■	■			■	■	■	■	
Thin Tube												■	■	●	●			■	■	■		

■ STANDARD ● AVAILABLE

*Celebrate|Cheer Program Button can be programmed for volume control use

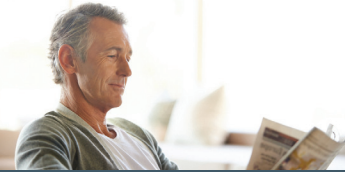

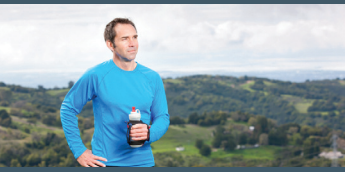



¹Celebrate¹⁰⁰, Cheer⁶⁰, Bliss¹⁰⁰ and Charm⁶⁰ Only

²Cheer⁶⁰ and Cheer⁴⁰ Only

³Charm⁶⁰ Only

⁴Optional for Celebrate¹⁰⁰ and Cheer⁶⁰ Only

LIFESTYLE GUIDE

How often does each listening situation occur for you?			Technology Level				
			20	40	60	80	100
	At Home / In Quiet	Occasionally					
		Frequently					
		Always					
	Small Group Conversations	Occasionally					
		Frequently					
		Always					
	Outdoor Activities	Occasionally					
		Frequently					
		Always					
	Telephone Use	Occasionally					
		Frequently					
		Always					
	Restaurant	Occasionally					
		Frequently					
		Always					
	Workplace	Occasionally					
		Frequently					
		Always					

The best technology for you is one that can match your specific listening needs. For best results, consider the technology level that matches your needs in each of the listening environments.